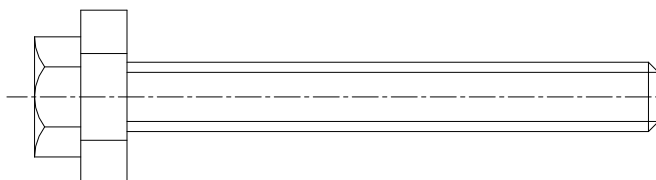
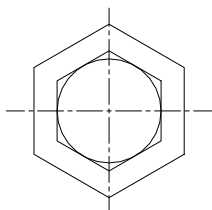
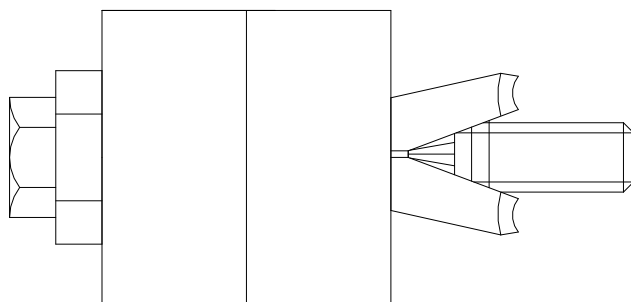
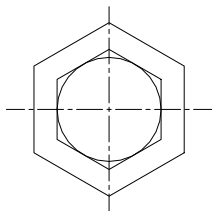
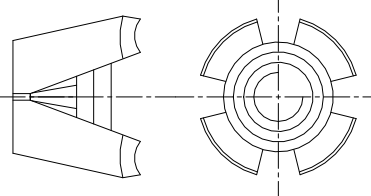


As supplied

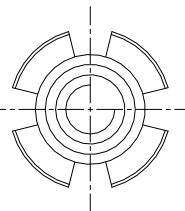
**BoxBolt**  
**M12 Size 3**  
 Fixing range 36 to 70mm  
 Hole size =  $\varnothing 20.0 +1.0, -0.25$



Blocks for creating application



Example application



This block is a true representation of a BoxBolt fixing in terms of fixing thickness and length. Please refer to our technical catalogue and/or web site for all other technical information and loading capacities. It is essential to specify the correct size hole for this product to function correctly. BoxBolt is available in Zinc Plated, Hot Dip Galvanised and 316 Stainless as standard.

[www.beamclamp.com/resources/beamclamp-configurator](http://www.beamclamp.com/resources/beamclamp-configurator)

Kee Safety Ltd

Web site: [www.beamclamp.com](http://www.beamclamp.com)

Email: [sales@beamclamp.com](mailto:sales@beamclamp.com)

T: 0044 (0) 1384 632188

F: 0044 (0) 1384 632192



A KEE SAFETY PRODUCT